

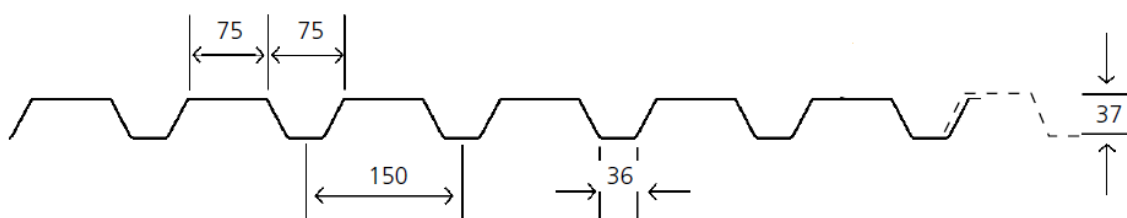
## DIMOND NPM 900

### METAL TRAYDECK SUBSTRATE

The NPM 900 profile metal tray deck has been developed by Dimond to provide excellent support for Nuralite’s Nuratherm Insulated roof system.

The NPM 900 has wide ridges to provide a stable substrate upon which the Enertherm PIR Insulation boards are fastened to. The NPM 900 substrate is fastened to the supporting structure using screw fixings placed in the pan to further ensure a smooth deck surface.

#### Technical Information:



Dimensions:	Cover width 900mm, sheet width 960mm. Manufactured to site specific lengths.	
Nominal weight:	0.55 BMT	5.55kg / m
	0.75 BMT	7.47kg / m
Span – End	0.55 BMT	2,300mm
	0.75 BMT	2,700mm
Span – Internal	0.55 BMT	3,400mm
	0.75 BMT	4,000mm

Note: Please consult with a Nuralite technical advisor if greater spans are required or if non-standard loads, such as a green roof, are anticipated.