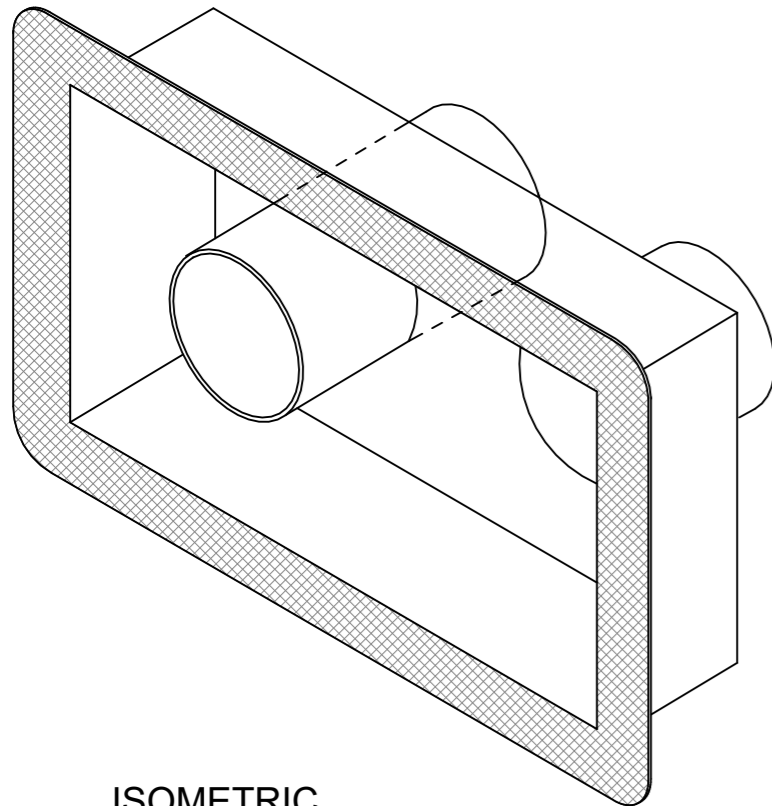
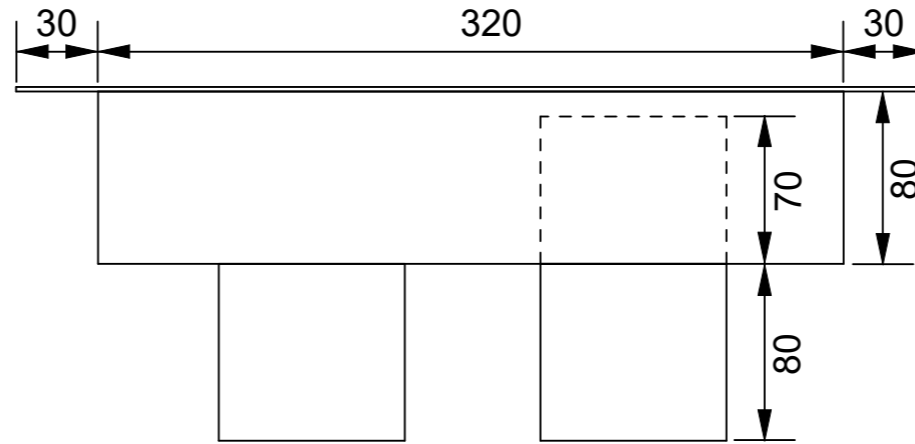
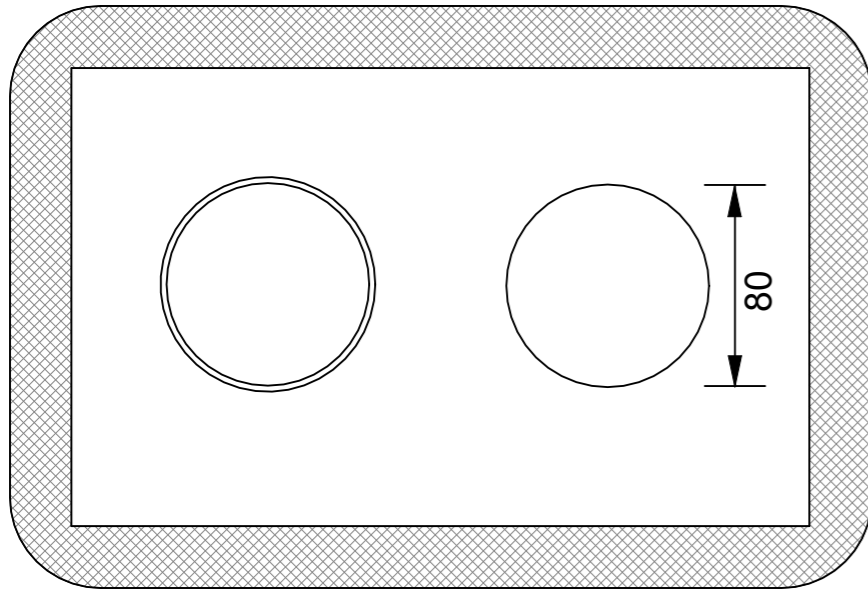
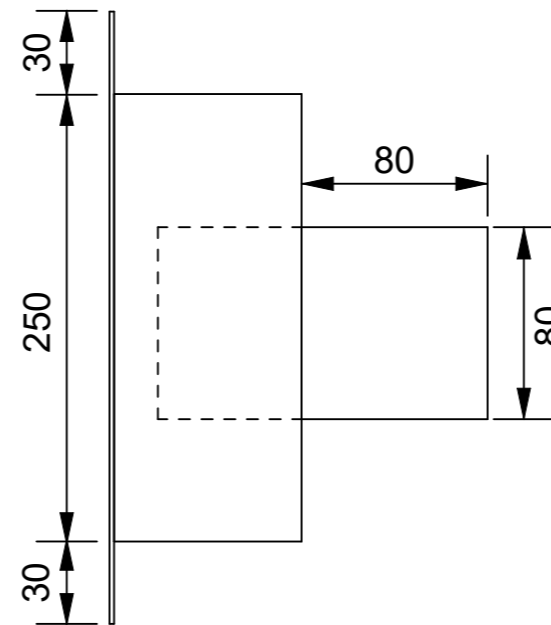


This drawing is indicative only and not for construction. This detail depicts Nuralite products and components for correct use as per the installation manual. All other elements are typical only - refer to the designer.



ISOMETRIC



AK80SUMP

**320X250X80
SUMP
80mm ROUND OUTLET & OVERFLOW**

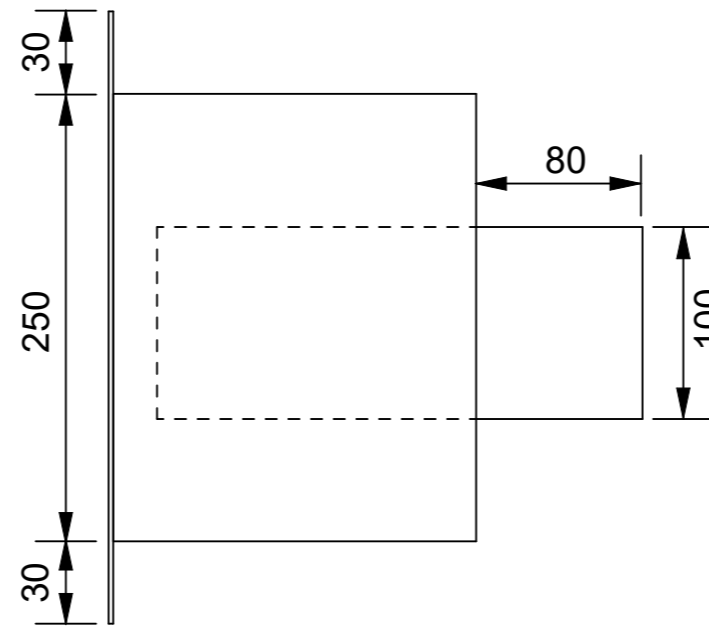
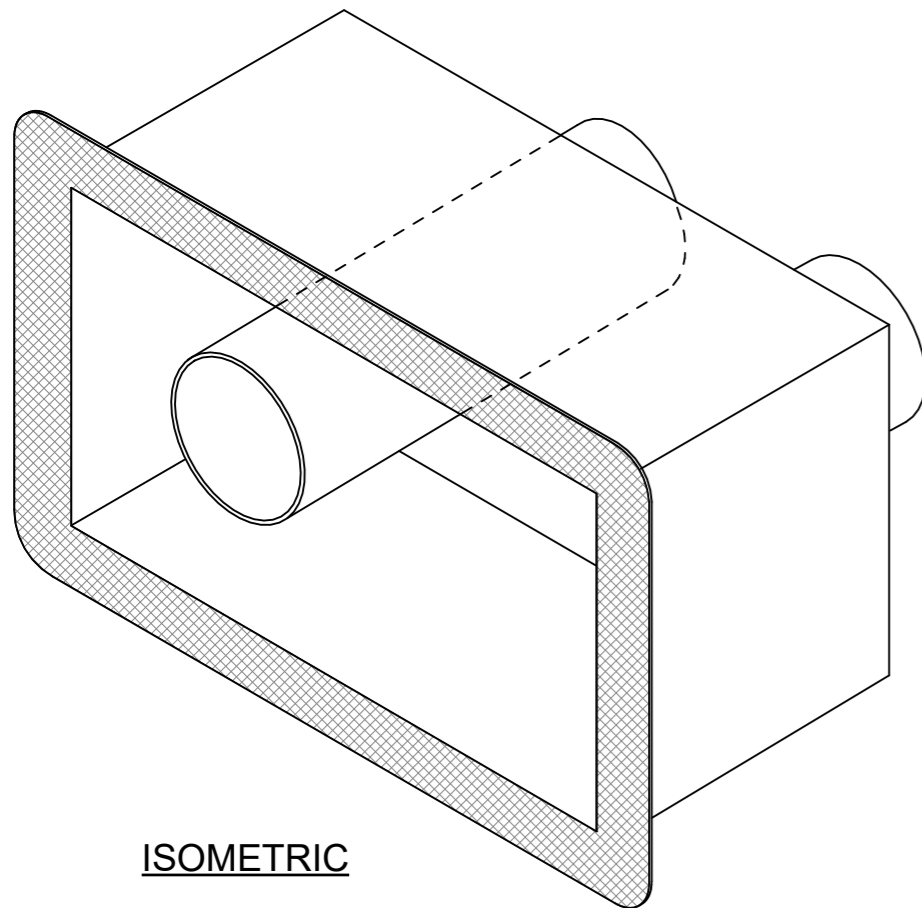
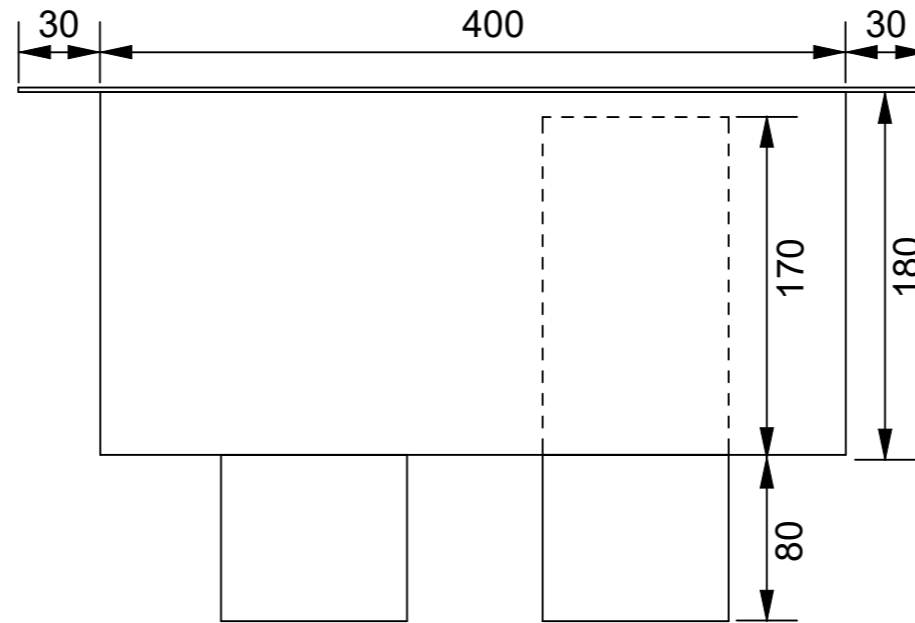
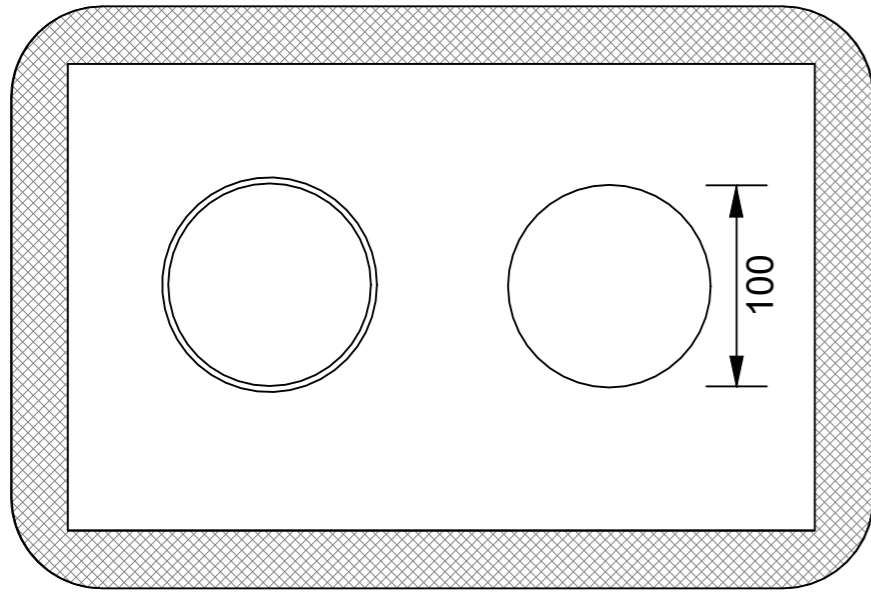
Note:
Leaf guards and top hats available for this sump.

Note 1:
Aluminium must be separated on CCA treated substrates and green concrete either by a 5mm gap or bitumen separation layer. Refer tables 21 & 22 E2/AS1 for Compatibility of materials in contact.

Note 2:
For TPO application, refer to Nuralite Method Statement "Detailing aluminium accessories with Nuraply TPO."

Note 3:
Available in stainless steel to order. Bespoke sizes manufactured to the architects specific detail.

This drawing is indicative only and not for construction. This detail depicts Nuralite products and components for correct use as per the installation manual. All other elements are typical only - refer to the designer.



AK100SUMP

400X250X180

SUMP

100mm ROUND OUTLET & OVERFLOW

Note:

Leaf guards and top hats available for this sump.

Note 1:

Aluminium must be separated on CCA treated substrates and green concrete either by a 5mm gap or bitumen separation layer. Refer tables 21 & 22 E2/AS1 for Compatibility of materials in contact.

Note 2:

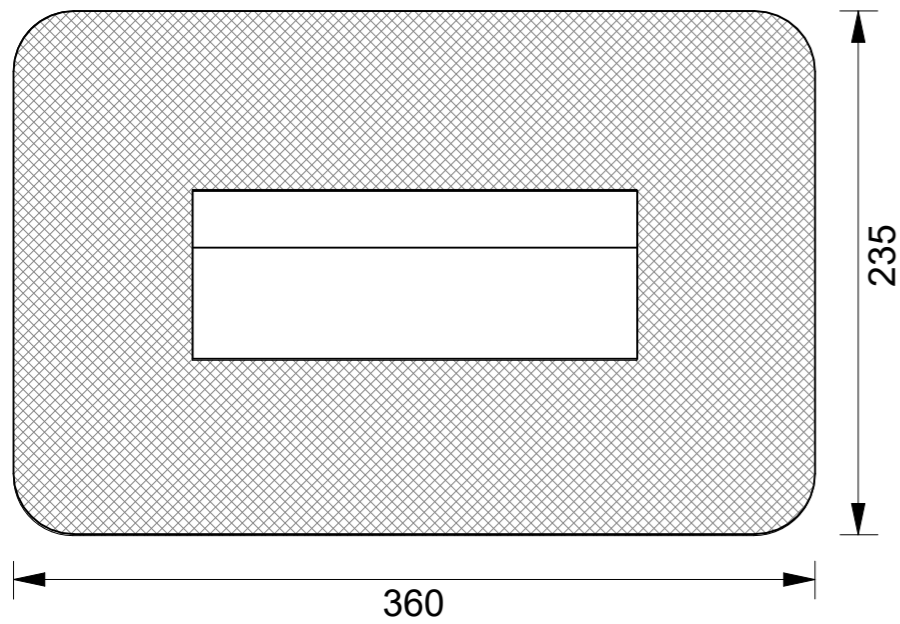
For TPO application, refer to Nuralite Method Statement "Detailing aluminium accessories with Nuraply TPO."

Note 3:

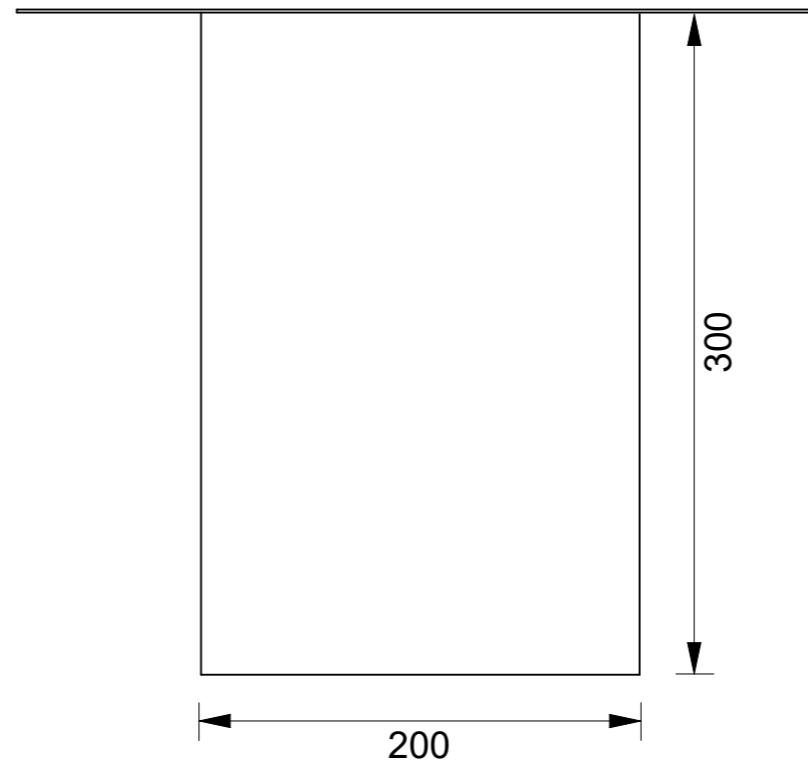
Available in stainless steel to order. Bespoke sizes manufactured to the architects specific detail.

This drawing is indicative only and not for construction. This detail depicts Nuralite products and components for correct use as per the installation manual. All other elements are typical only - refer to the designer.

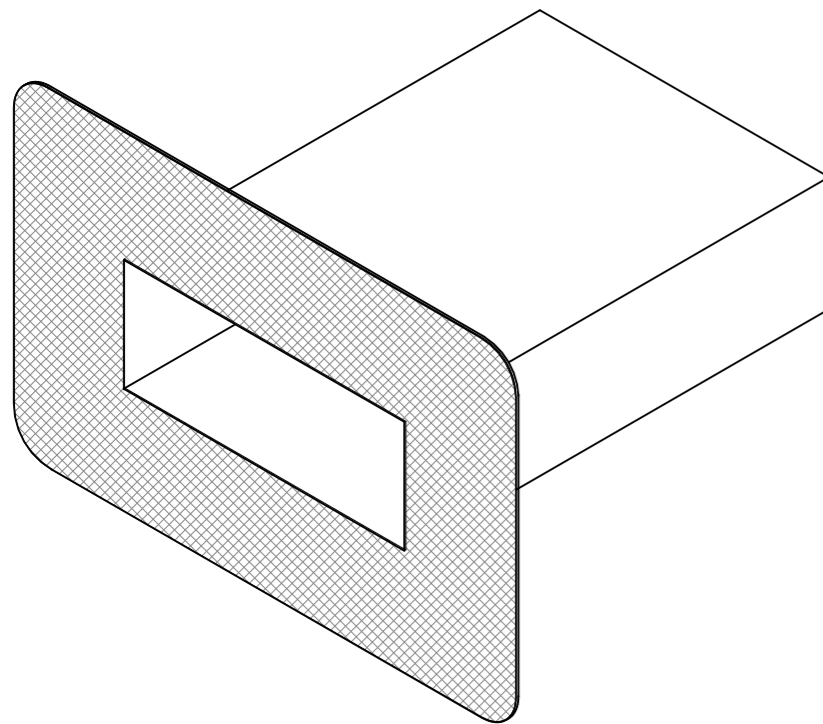
FRONT



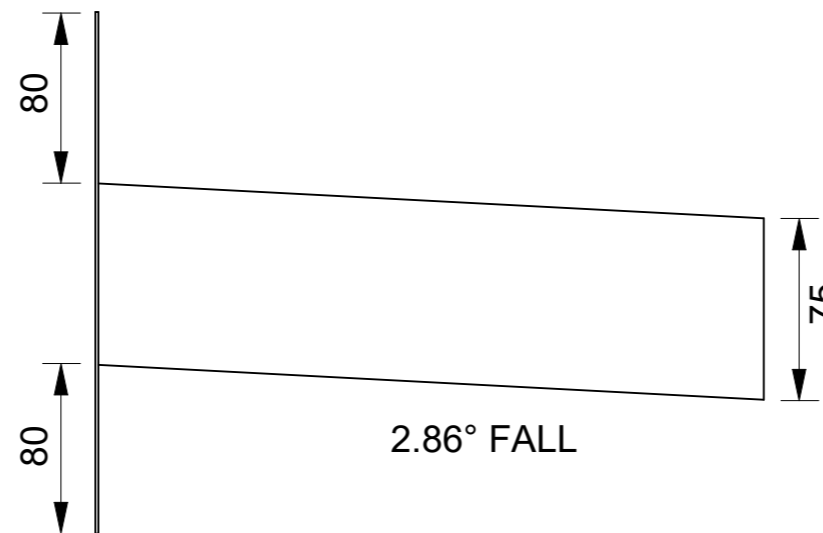
TOP



ISOMETRIC



RIGHT



PE20075OF

**200mm X 75mm
ALUMINIUM OVERFLOW
300mm OUTLET WITH 2.86° fall**

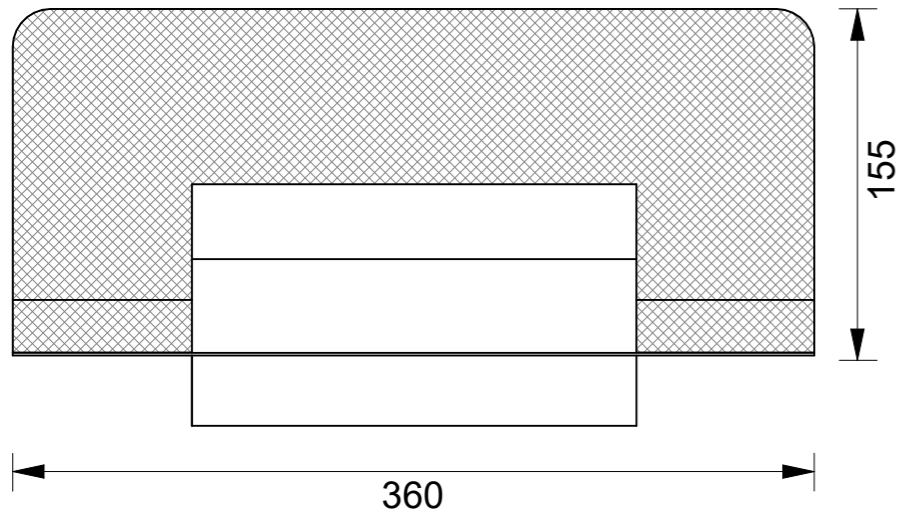
Note 1:
Aluminium must be separated on CCA treated substrates and green concrete either by a 5mm gap or bitumen separation layer. Refer tables 21 & 22 E2/AS1 for Compatibility of materials in contact.

Note 2:
For TPO application, refer to Nuralite Method Statement "Detailing aluminium accessories with Nuraply TPO."

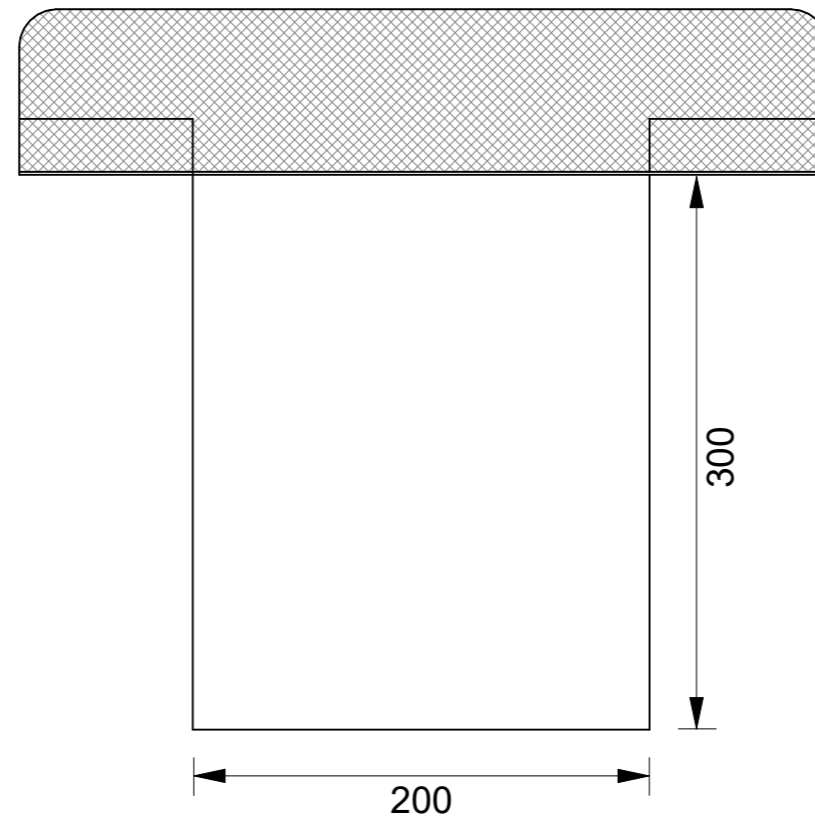
Note 3:
Available in stainless steel to order. Bespoke sizes manufactured to the architects specific detail.

This drawing is indicative only and not for construction. This detail depicts Nuralite products and components for correct use as per the installation manual. All other elements are typical only - refer to the designer.

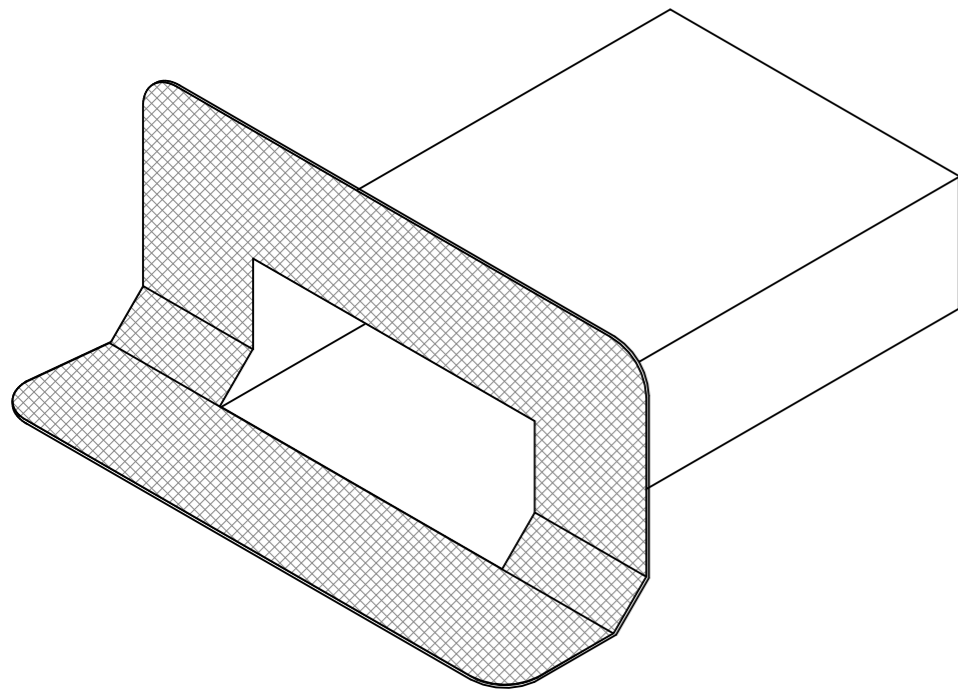
FRONT



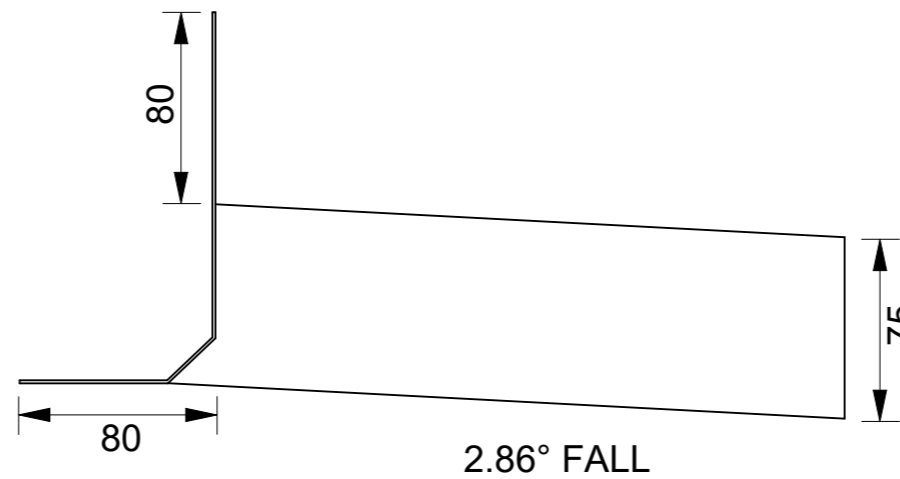
TOP



ISOMETRIC



RIGHT



PE20075SC

**200mm x 75mm
ALUMINIUM SCUPPER
300mm OUTLET with 2.86° fall**

Note:
Leaf guard available for this scupper.

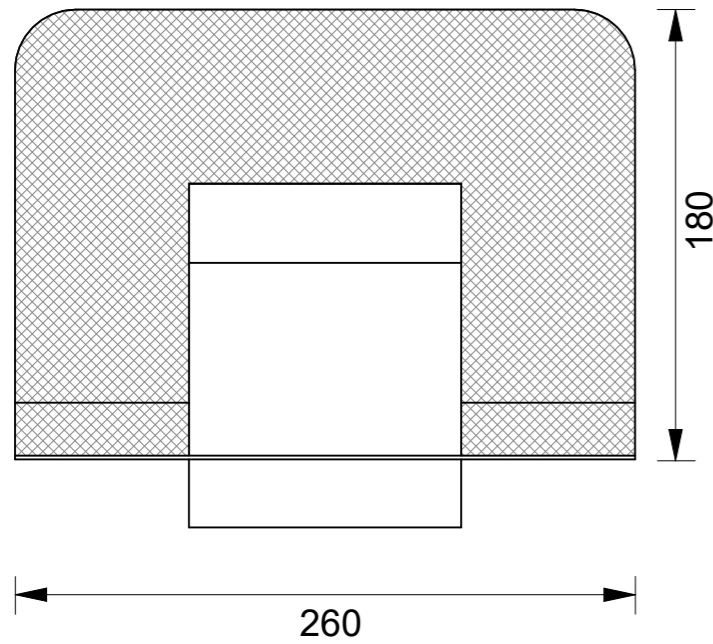
Note 1:
Aluminium must be separated on CCA treated substrates and green concrete either by a 5mm gap or bitumen separation layer. Refer tables 21 & 22 E2/AS1 for Compatibility of materials in contact.

Note 2:
For TPO application, refer to Nuralite Method Statement "Detailing aluminium accessories with Nuraply TPO."

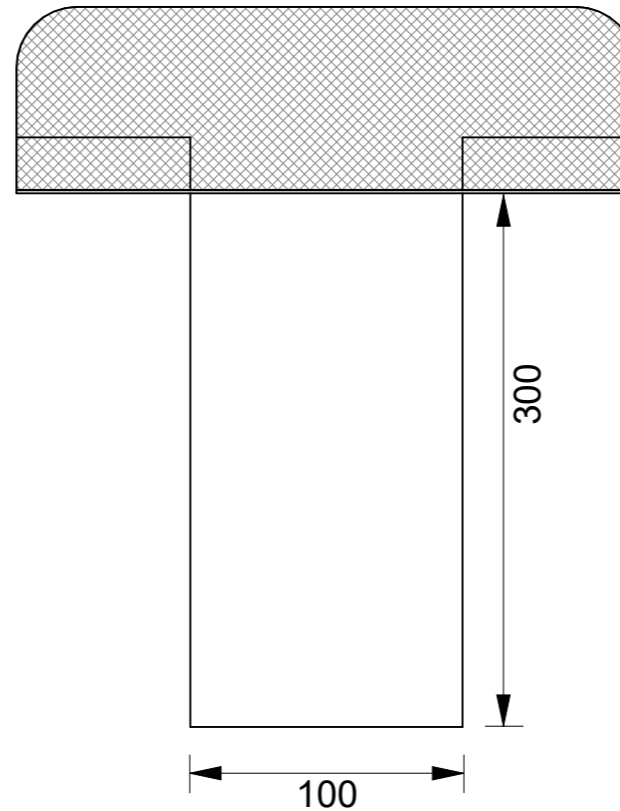
Note 3:
Available in stainless steel to order. Bespoke sizes manufactured to the architects specific detail.

This drawing is indicative only and not for construction. This detail depicts Nuralite products and components for correct use as per the installation manual. All other elements are typical only - refer to the designer.

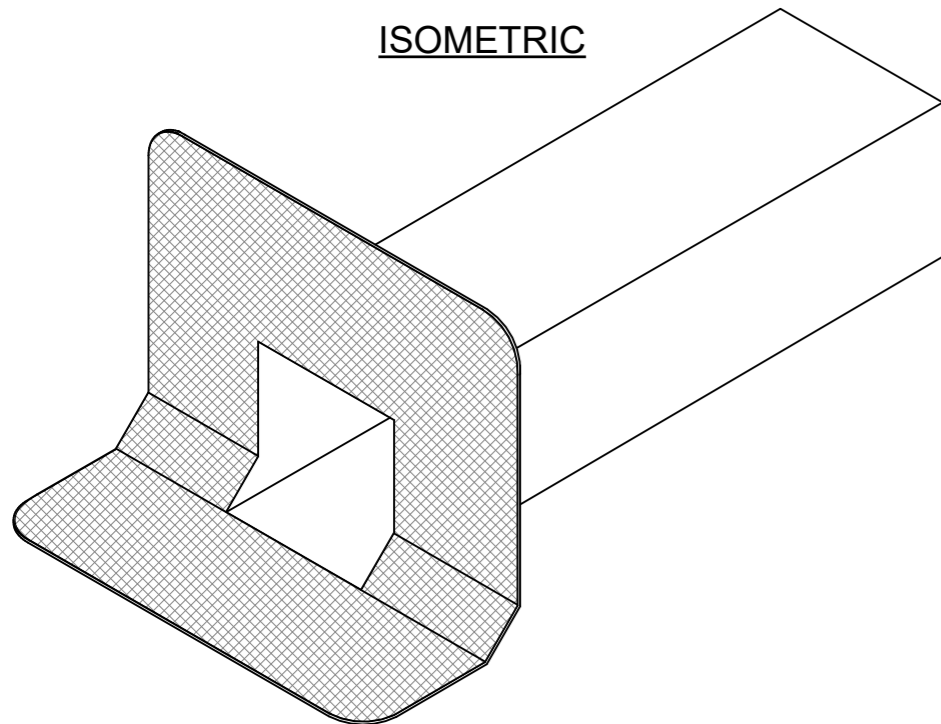
FRONT



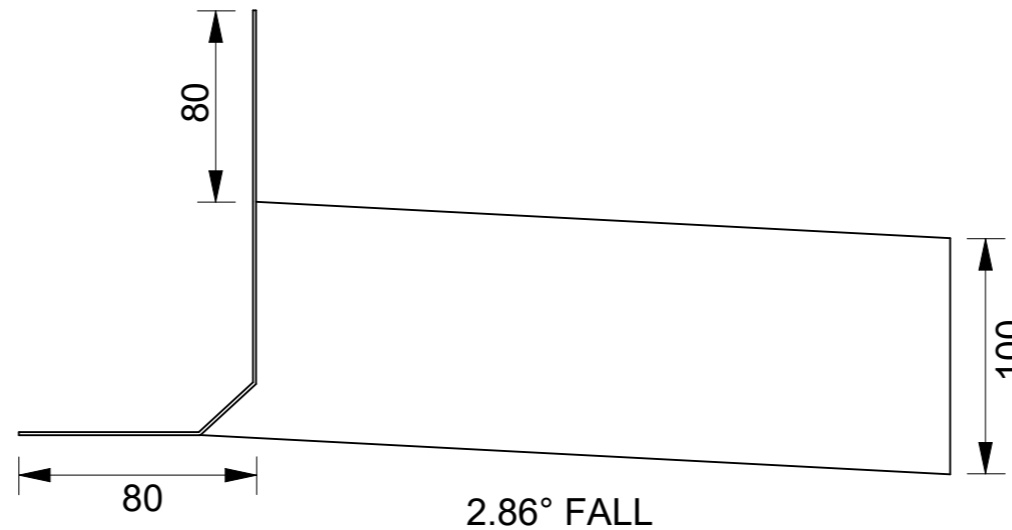
TOP



ISOMETRIC



RIGHT



PE100100SC

**100mm x 100mm
ALUMINIUM SCUPPER
300mm OUTLET with 2.86° fall**

Note:
Leaf guard available for this scupper.

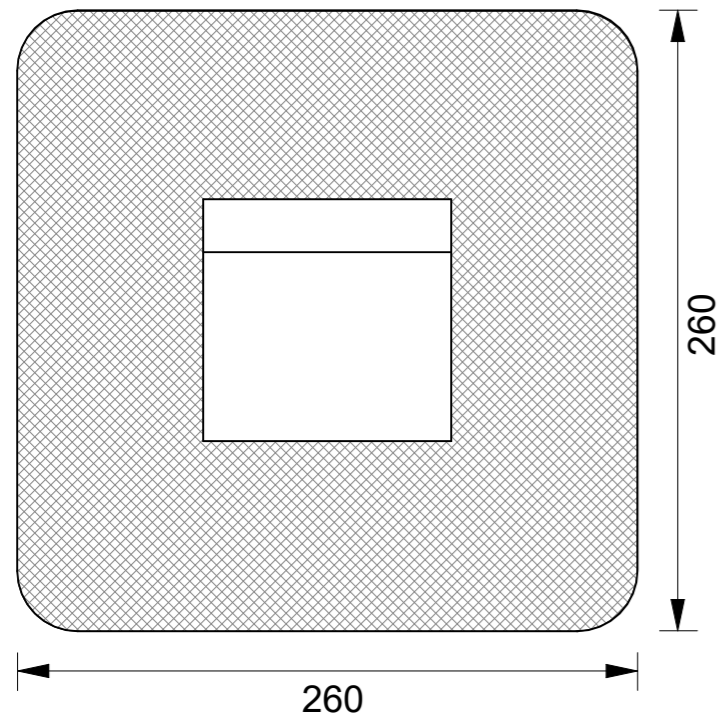
Note:
Aluminium must be separated on CCA treated substrates and green concrete either by a 5mm gap or bitumen separation layer. Refer tables 21 & 22 E2/AS1 for Compatibility of materials in contact.

Note 2:
For TPO application, refer to Nuralite Method Statement "Detailing aluminium accessories with Nuraply TPO."

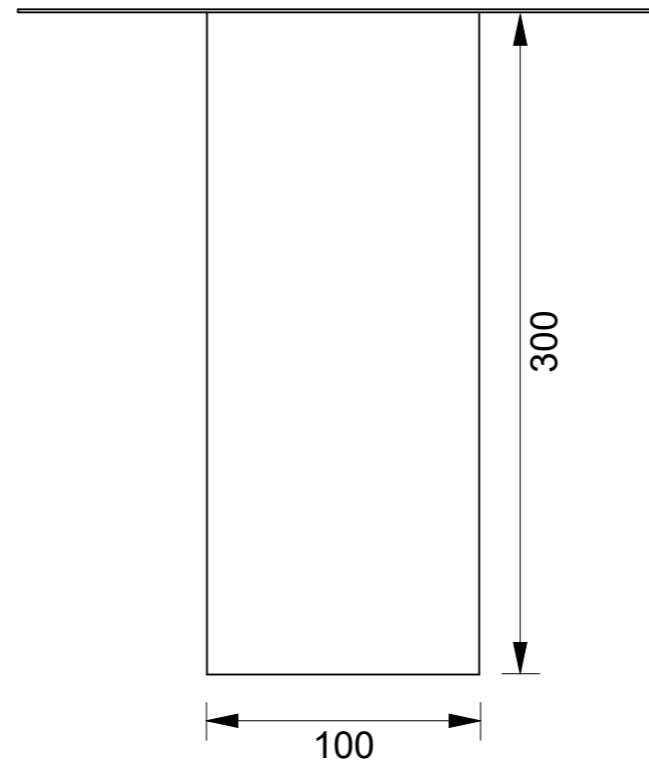
Note 3:
Available in stainless steel to order. Bespoke sizes manufactured to the architects specific detail.

This drawing is indicative only and not for construction. This detail depicts Nuralite products and components for correct use as per the installation manual. All other elements are typical only - refer to the designer.

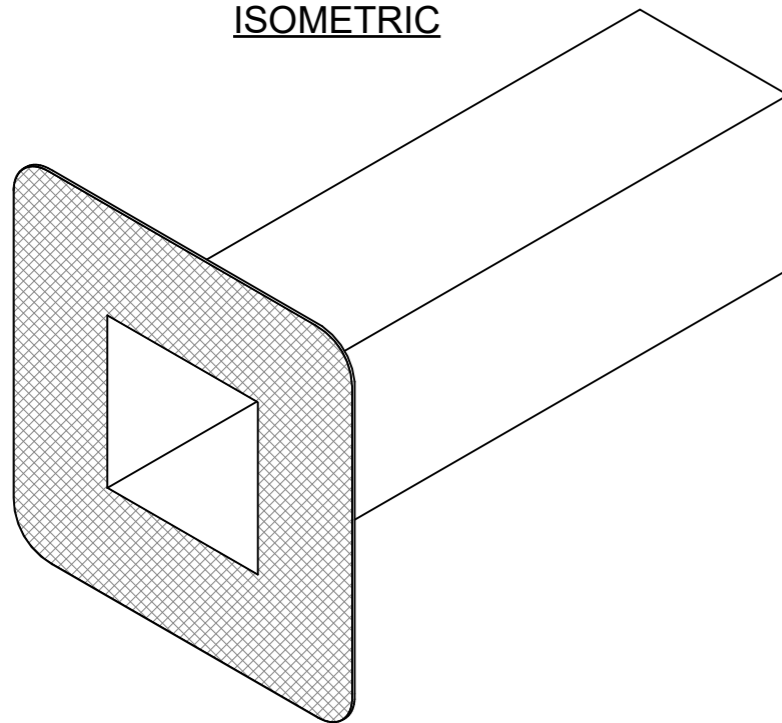
FRONT



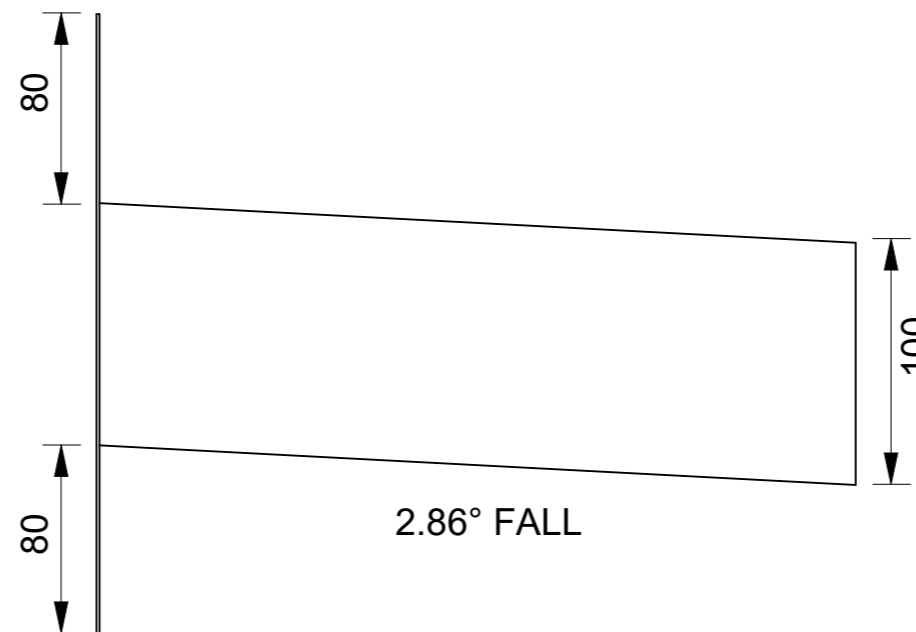
TOP



ISOMETRIC



RIGHT



PE100100OF

**100mm x 100mm
ALUMINIUM OVER FLOW
300mm OUTLET with 2.86° fall**

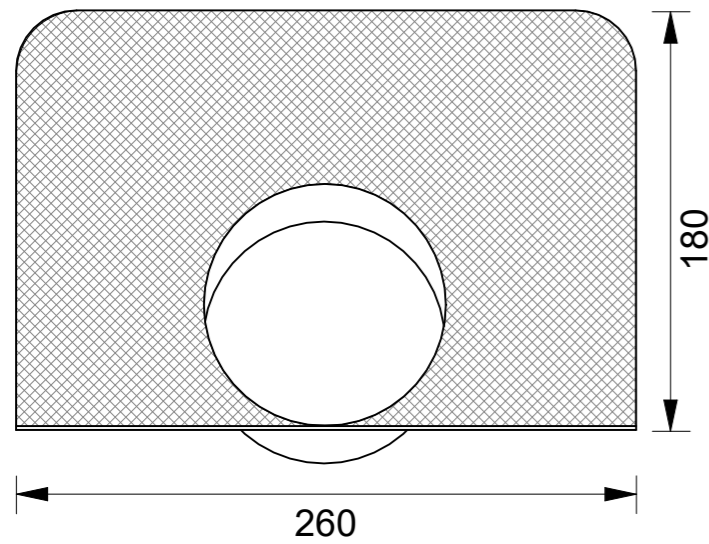
Note 1:
Aluminium must be separated on CCA treated substrates and green concrete either by a 5mm gap or bitumen separation layer. Refer tables 21 & 22 E2/AS1 for Compatibility of materials in contact.

Note 2:
For TPO application, refer to Nuralite Method Statement "Detailing aluminium accessories with Nuraply TPO."

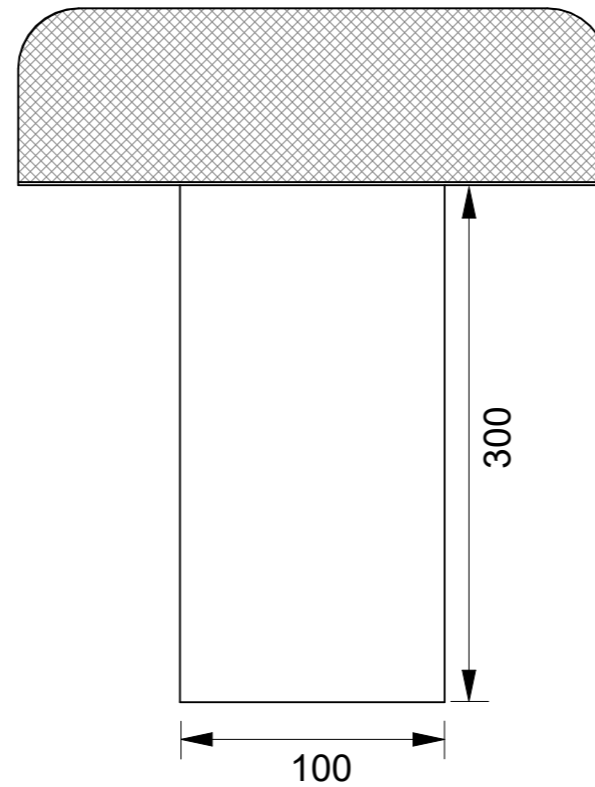
Note 3:
Available in stainless steel to order. Bespoke sizes manufactured to the architects specific detail.

This drawing is indicative only and not for construction. This detail depicts Nuralite products and components for correct use as per the installation manual. All other elements are typical only - refer to the designer.

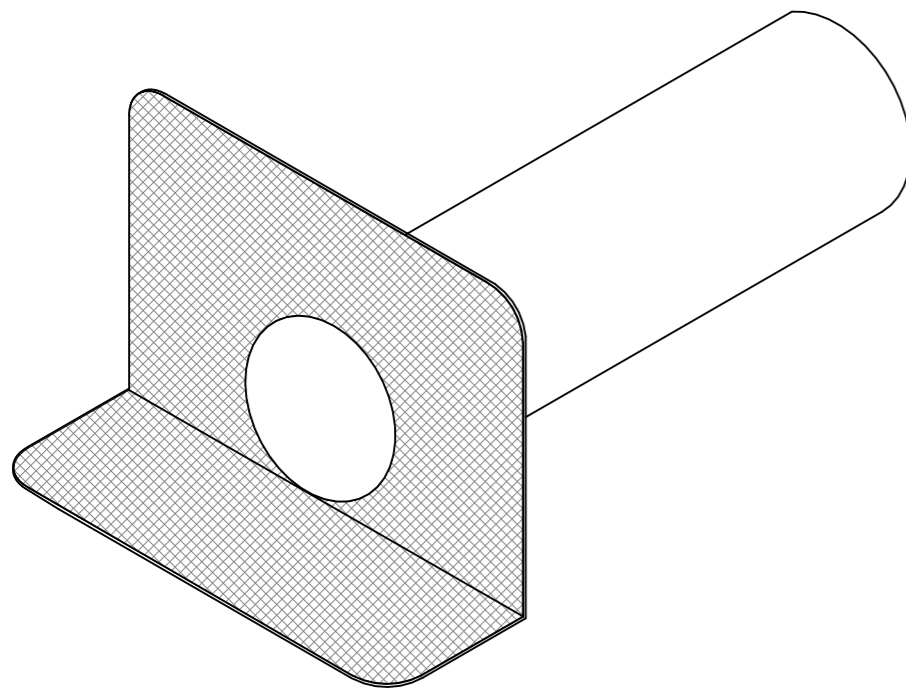
FRONT



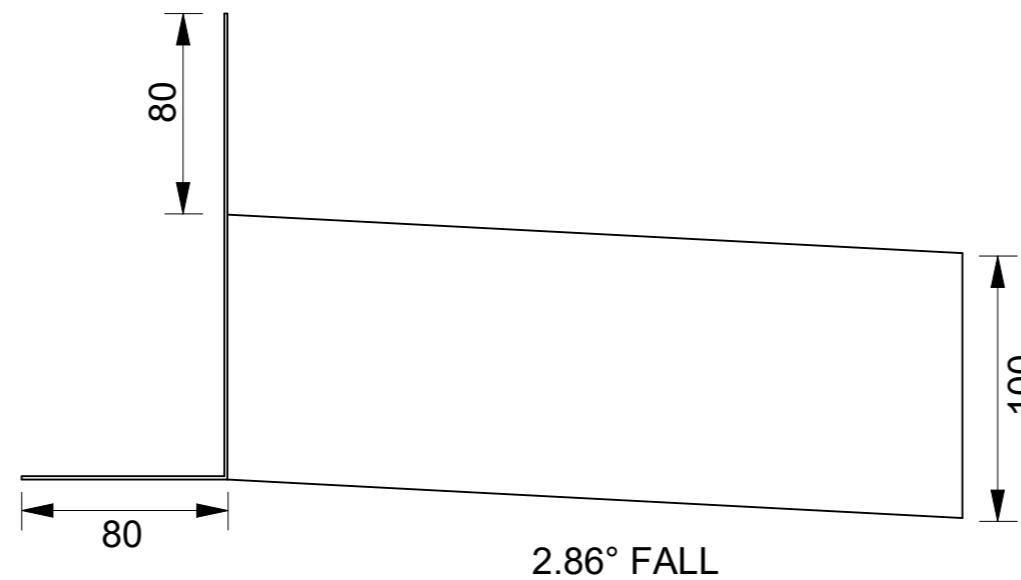
TOP



ISOMETRIC



RIGHT



PE100RSC

**100mm ROUND ALUMINIUM SCUPPER
180mm HIGH x 260mm UPSTAND FLANGE
300mm OUTLET with 2.86° fall**

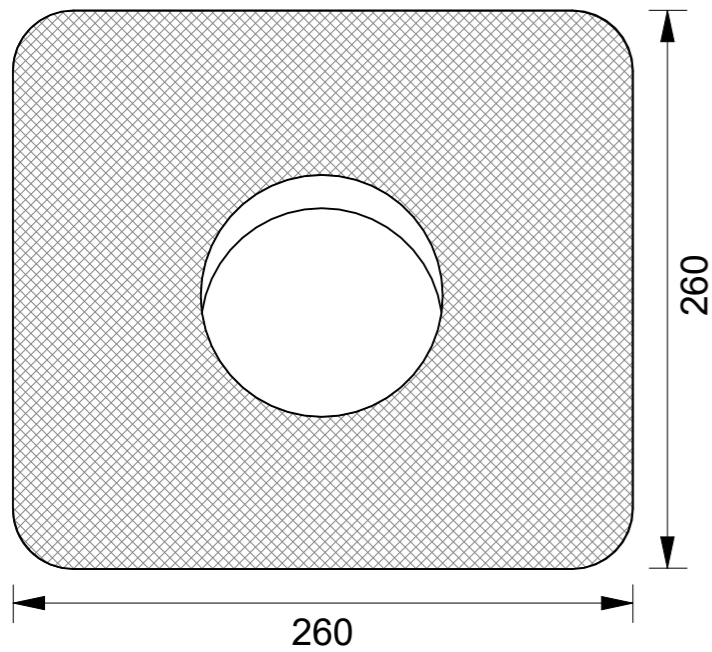
Note 1:
Aluminium must be separated on CCA treated substrates and green concrete either by a 5mm gap or bitumen separation layer. Refer tables 21 & 22 E2/AS1 for Compatibility of materials in contact.

Note 2:
For TPO application, refer to Nuralite Method Statement "Detailing aluminium accessories with Nuraply TPO."

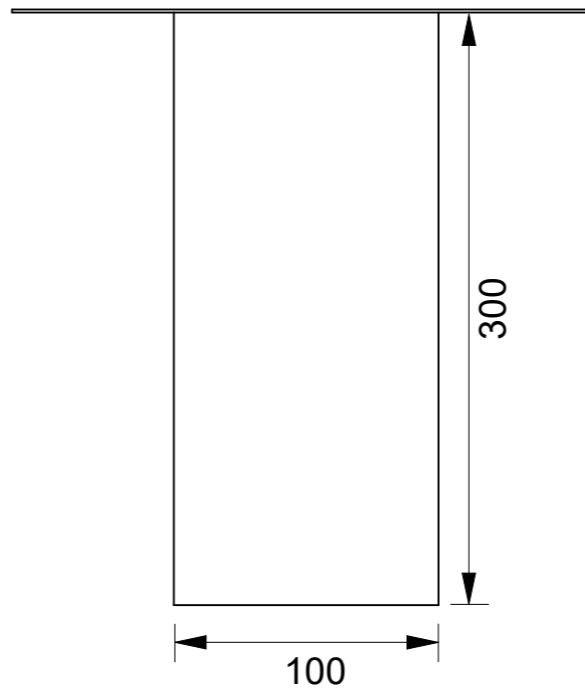
Note 3:
Available in stainless steel to order. Bespoke sizes manufactured to the architects specific detail.

This drawing is indicative only and not for construction. This detail depicts Nuralite products and components for correct use as per the installation manual. All other elements are typical only - refer to the designer.

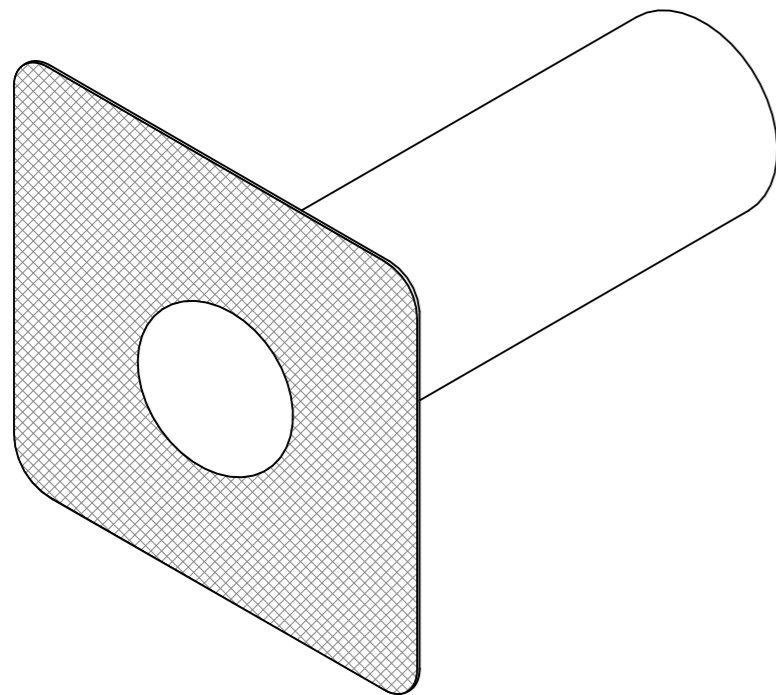
FRONT



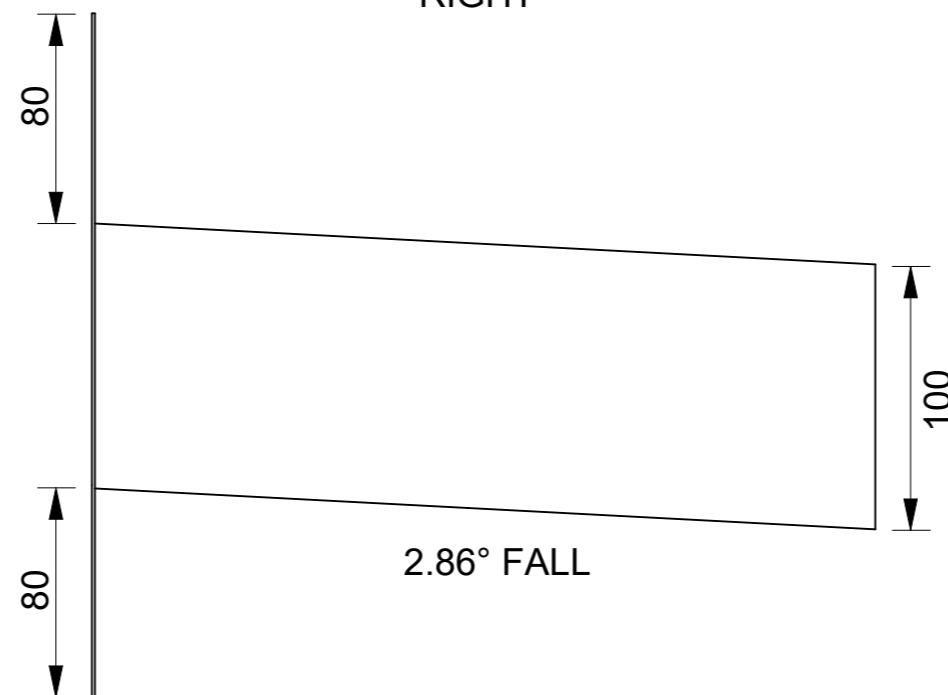
TOP



ISOMETRIC



RIGHT



PE100ROF

**100mm ROUND ALUMINIUM SCUPPER
260mm HIGH x 260mm UPSTAND FLANGE
300mm OUTLET with 2.86° fall**

Note 1:

Aluminium must be separated on CCA treated substrates and green concrete either by a 5mm gap or bitumen separation layer. Refer tables 21 & 22 E2/AS1 for Compatibility of materials in contact.

Note 2:

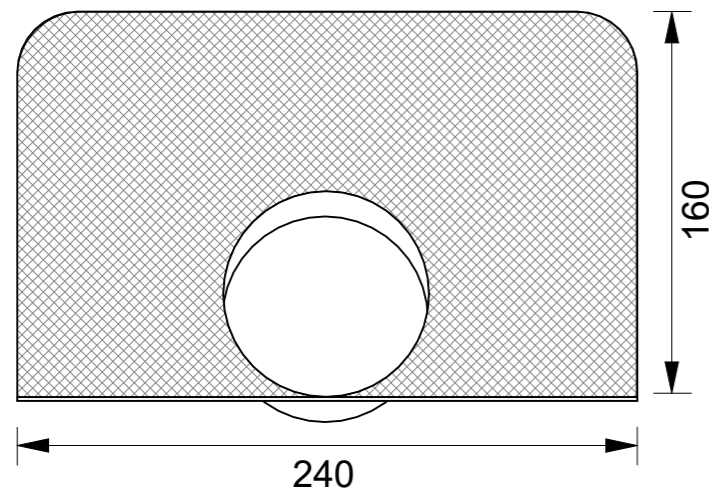
For TPO application, refer to Nuralite Method Statement "Detailing aluminium accessories with Nuraply TPO."

Note 3:

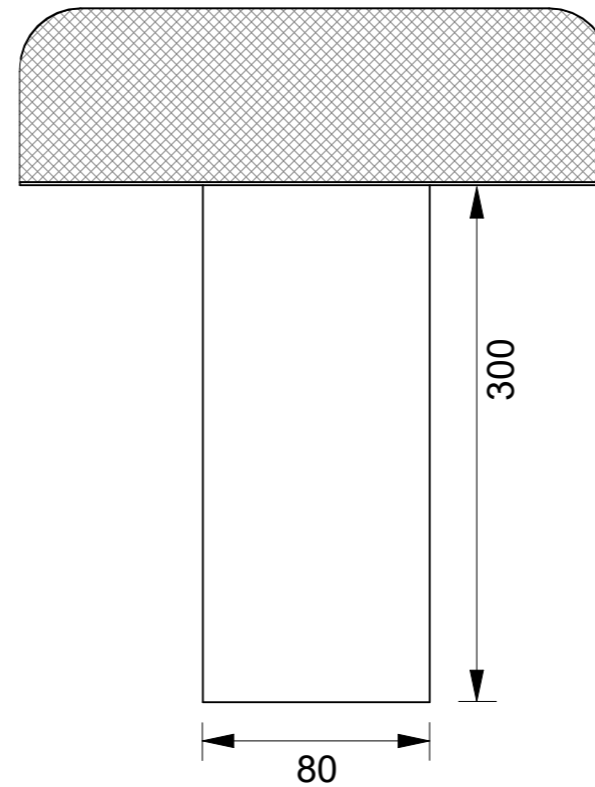
Available in stainless steel to order. Bespoke sizes manufactured to the architects specific detail.

This drawing is indicative only and not for construction. This detail depicts Nuralite products and components for correct use as per the installation manual. All other elements are typical only - refer to the designer.

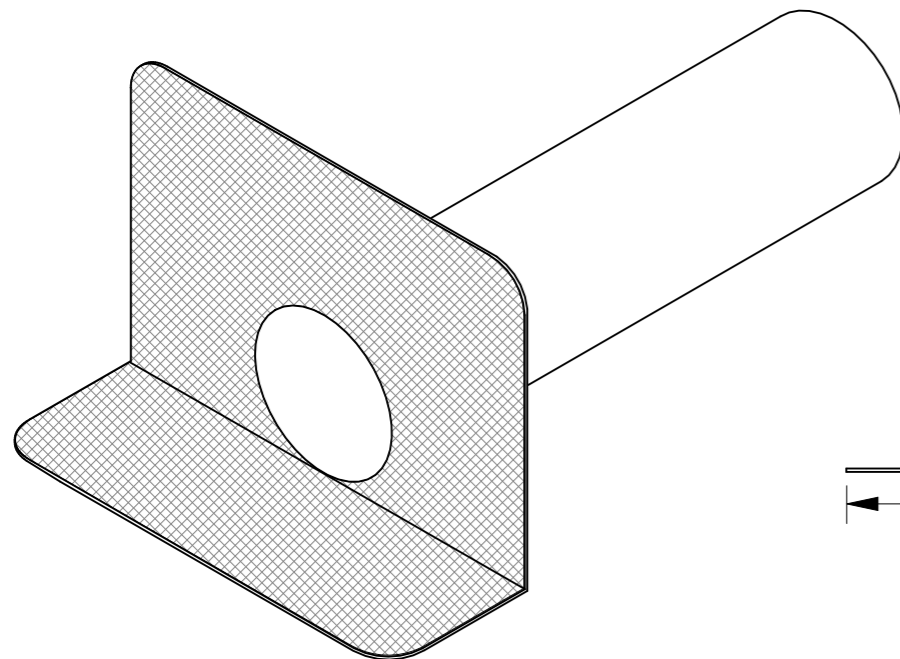
FRONT



TOP



ISOMETRIC



RIGHT



PE8ORSC

**80mm ROUND ALUMINIUM SCUPPER
160mm HIGH x 240mm UPSTAND FLANGE
300mm OUTLET with 2.86° fall**

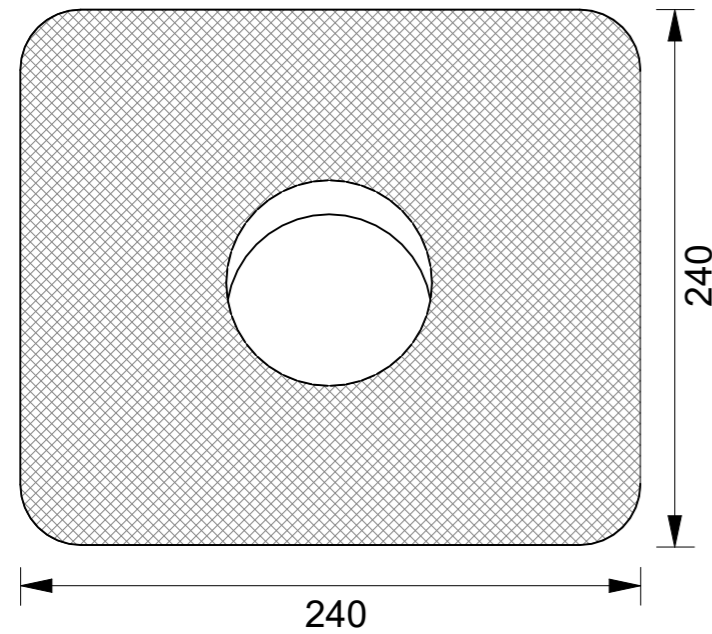
Note 1:
Aluminium must be separated on CCA treated substrates and green concrete either by a 5mm gap or bitumen separation layer. Refer tables 21 & 22 E2/AS1 for Compatibility of materials in contact.

Note 2:
For TPO application, refer to Nuralite Method Statment "Detailing aluminium accessories with Nuraply TPO."

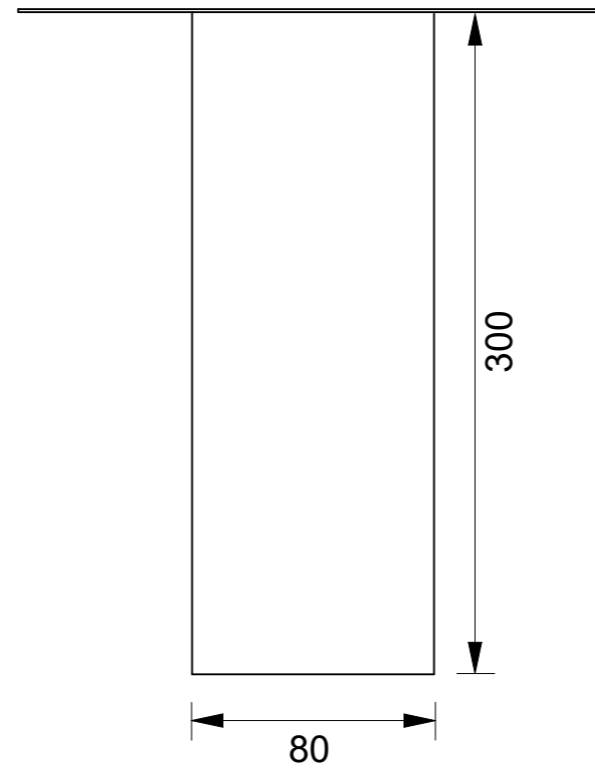
Note 3:
Available in stainless steel to order. Bespoke sizes manufactured to the architects specific detail.

This drawing is indicative only and not for construction. This detail depicts Nuralite products and components for correct use as per the installation manual. All other elements are typical only - refer to the designer.

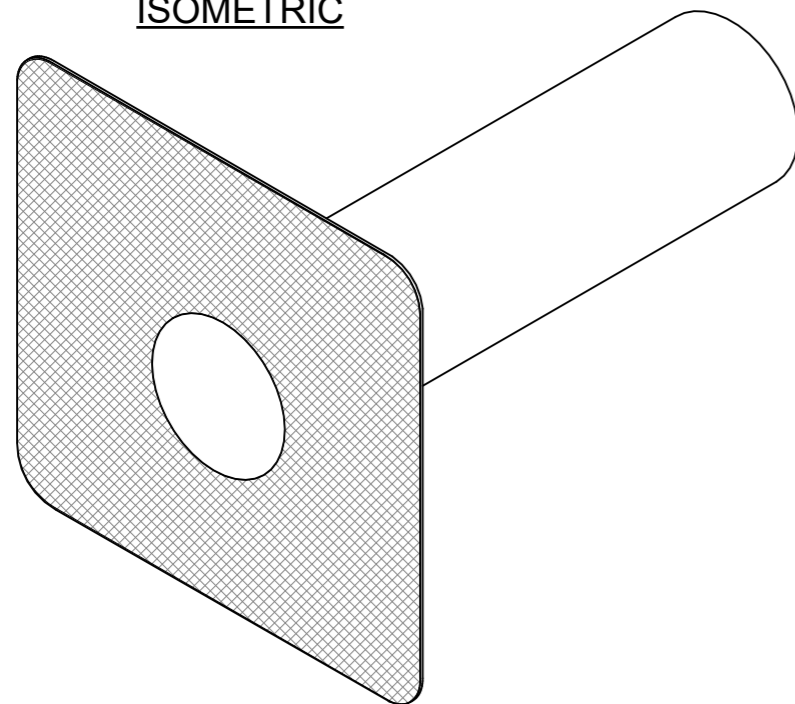
FRONT



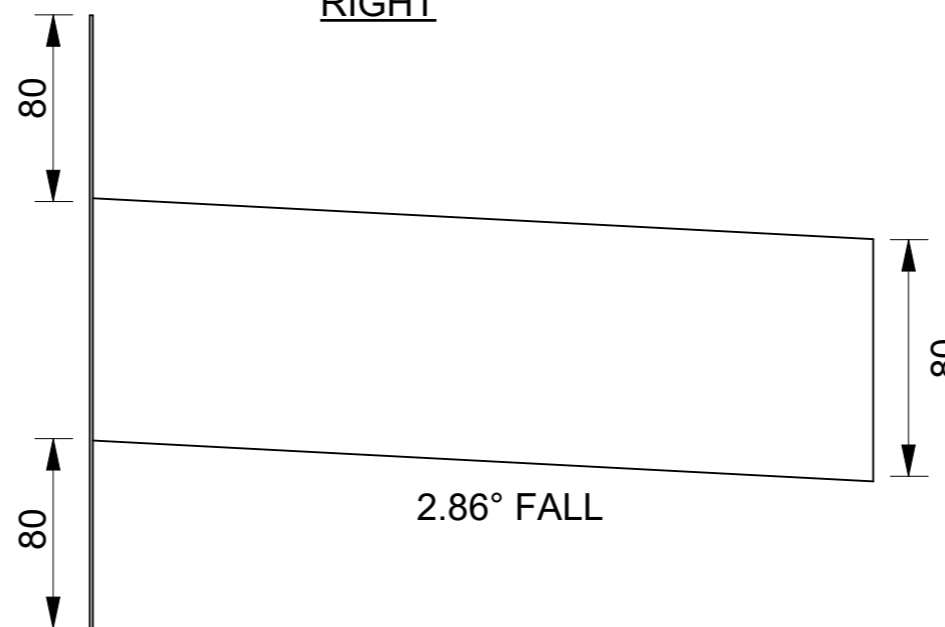
TOP



ISOMETRIC



RIGHT



PE80ROF

**80mm ROUND ALUMINIUM OVERFLOW SCUPPER
240mm HIGH x 240mm UPSTAND FLANGE
300mm OUTLET with 2.86° fall**

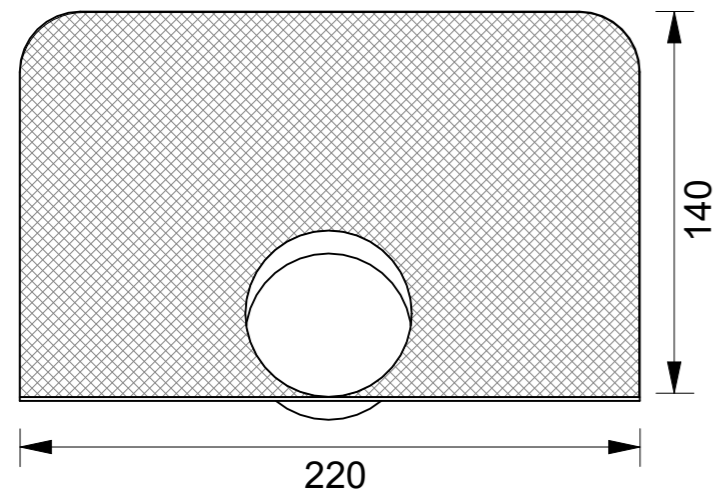
Note 1:
Aluminium must be separated on CCA treated substrates and green concrete either by a 5mm gap or bitumen separation layer. Refer tables 21 & 22 E2/AS1 for Compatibility of materials in contact.

Note 2:
For TPO application, refer to Nuralite Method Statement "Detailing aluminium accessories with Nuraply TPO."

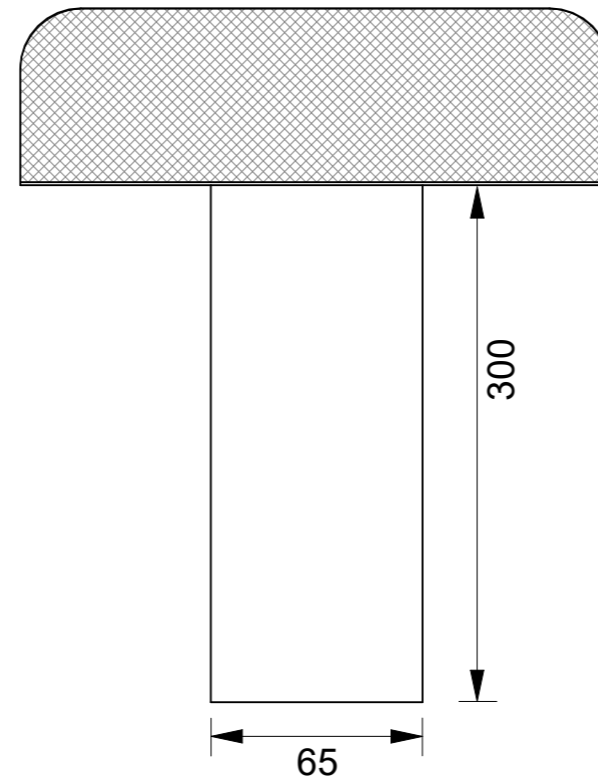
Note 3:
Available in stainless steel to order. Bespoke sizes manufactured to the architects specific detail.

This drawing is indicative only and not for construction. This detail depicts Nuralite products and components for correct use as per the installation manual. All other elements are typical only - refer to the designer.

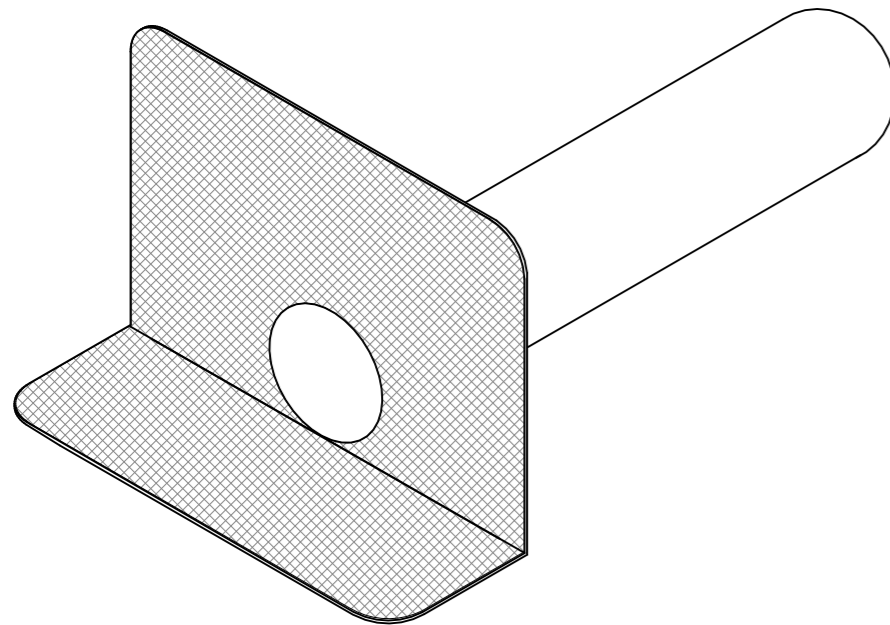
FRONT



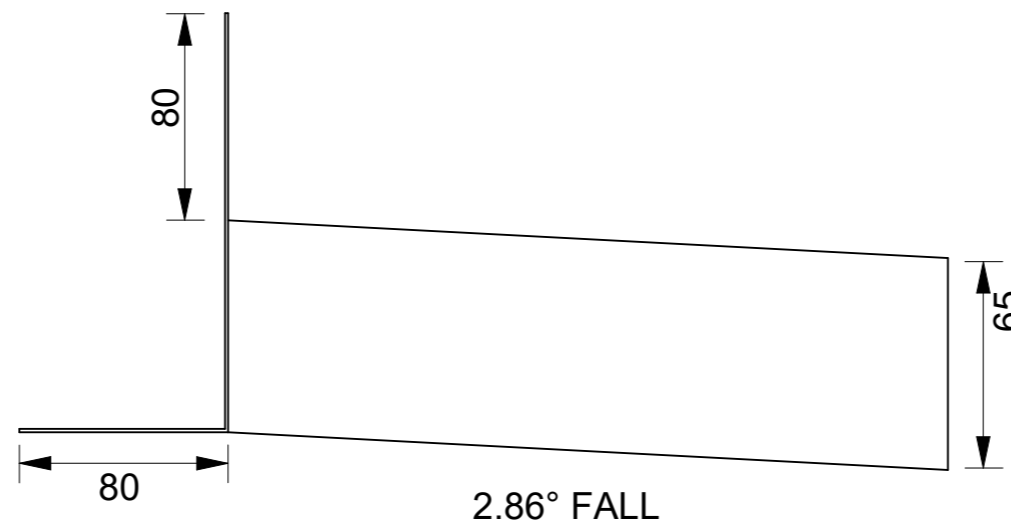
TOP



ISOMETRIC



RIGHT



PE65RSC

**65mm ROUND ALUMINIUM SCUPPER
140mm HIGH x 220mm UPSTAND FLANGE
300mm OUTLET with 2.86° fall**

Note 1:
Aluminium must be separated on CCA treated substrates and green concrete either by a 5mm gap or bitumen separation layer. Refer tables 21 & 22 E2/AS1 for Compatibility of materials in contact.

Note 2:
For TPO application, refer to Nuralite Method statement "Detailing aluminium accessories with Nuraply TPO."

Note 3:
Available in stainless steel to order Bespoke sizes
Manufactured to the architects specific detail.

This drawing is indicative only and not for construction. This detail depicts Nuralite products and components for correct use as per the installation manual. All other elements are typical only - refer to the designer.

SUMP TOP HAT



SCUPPER METAL LEAF GUARD



SUMP PLASTIC LEAF GUARD



SUMP METAL LEAF GUARD

